

HumanKine® IL-12 (Recombinant Human)



Animal Component-Free

Human cell expressed

Tag-Free

Endotoxin Free

Product Description

Animal-free Recombinant Human IL-12 is expressed in human 293 cells as a heterodimeric cytokine composed of two glycosylated and disulfide-linked subunits (p40 cysteine-linked to p35). Production in human 293 cells uses a serum-free, chemically defined media and offers authentic glycosylation. IL-12 is a potent regulator of cell mediated immune responses and it induces IFN-gamma production by NK and T cells. It is produced by activated monocytes/macrophage cells, B lymphocytes, and connective tissue type mast cells.

Alternative Names CLMF, CLMF p35, IL 12 subunit p35, IL 12A, IL12, IL-12, IL12A, Interleukin 12 subunit alpha, NFSK, NKSF1, P35

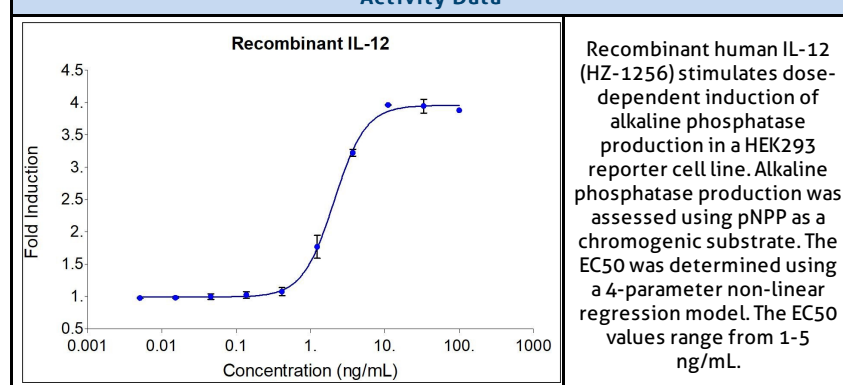
Source Human Embryonic Kidney cells (HEK293). HEK293-derived IL-12 protein

Species Reactivity human,mouse

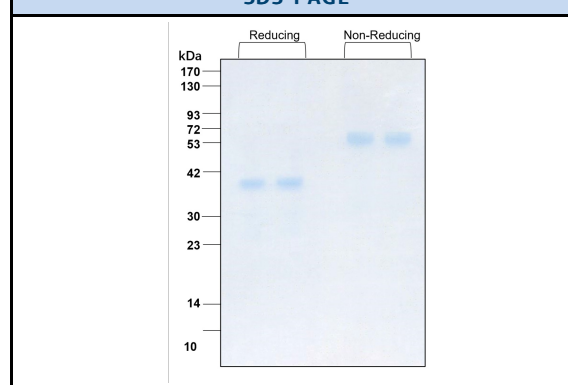
Specifications

Test	Method	Specification
Activity	Dose-dependent induction of alkaline phosphatase production in a HEK293 reporter cell line.	0.8-4 ng/mL EC50
Molecular Mass	SDS-PAGE	57 kDa, heterodimer, glycosylated
Purity	SDS-PAGE	>95%
Endotoxin	LAL	<1 EU/μg

Activity Data



SDS-PAGE



Preparation	
Shipping Temperature	ambient temperature
Formulation	1x PBS, See Certificate of Analysis for details
Reconstitution	Briefly centrifuge the vial before opening. It is recommended to reconstitute the protein in sterile 1xPBS pH 7.4 containing 0.1% endotoxin-free recombinant human serum albumin (HSA).

Stability and Storage	Product Form	Temperature Conditions	Storage Time (From Date of Receipt)
	Lyophilized	-20°C to -80°C	Until Expiry Date
	Lyophilized	Room Temperature	2 weeks
	Reconstituted as per CofA	-20°C to -80°C	6 months
	Reconstituted as per CofA	4°C	1 week
Avoid repeated freeze-thaw cycles.			

www.ptglab.com

Document #: FR-QA118-101 Rev 0
Data Sheet Version #: 1

Proteintech Group, Inc.
5500 Pearl Street, Suite 400 Rosemont, IL 60612
t: 1-888-478-4522; f: 1-312-455-8408
Email: proteintech@ptglab.com